

Cristofoli

I N T E R N A T I O N A L

CRISTOLITE™

Lightweight Stone Cladding Technology

CONTENTS

We Are Cristofoli

The home of lightweight stone 4-5

Product Overview

Cristolite 8-9

Key Features 10-11

Standard Materials 12-15

System Overview

Lightweight Substructure 18-19

Key Features 20-21

System Example 22-23

Service Overview

Our Service 26-27

Bespoke Design & Manufacture 28-29



Cristolite™ is our innovative, industry leading lightweight stone panel. Designed to meet the stringent demands of today's construction industry, it is particularly well suited for external cladding for its fire and mechanical performance.

WE ARE CRISTOFOLI INTERNATIONAL

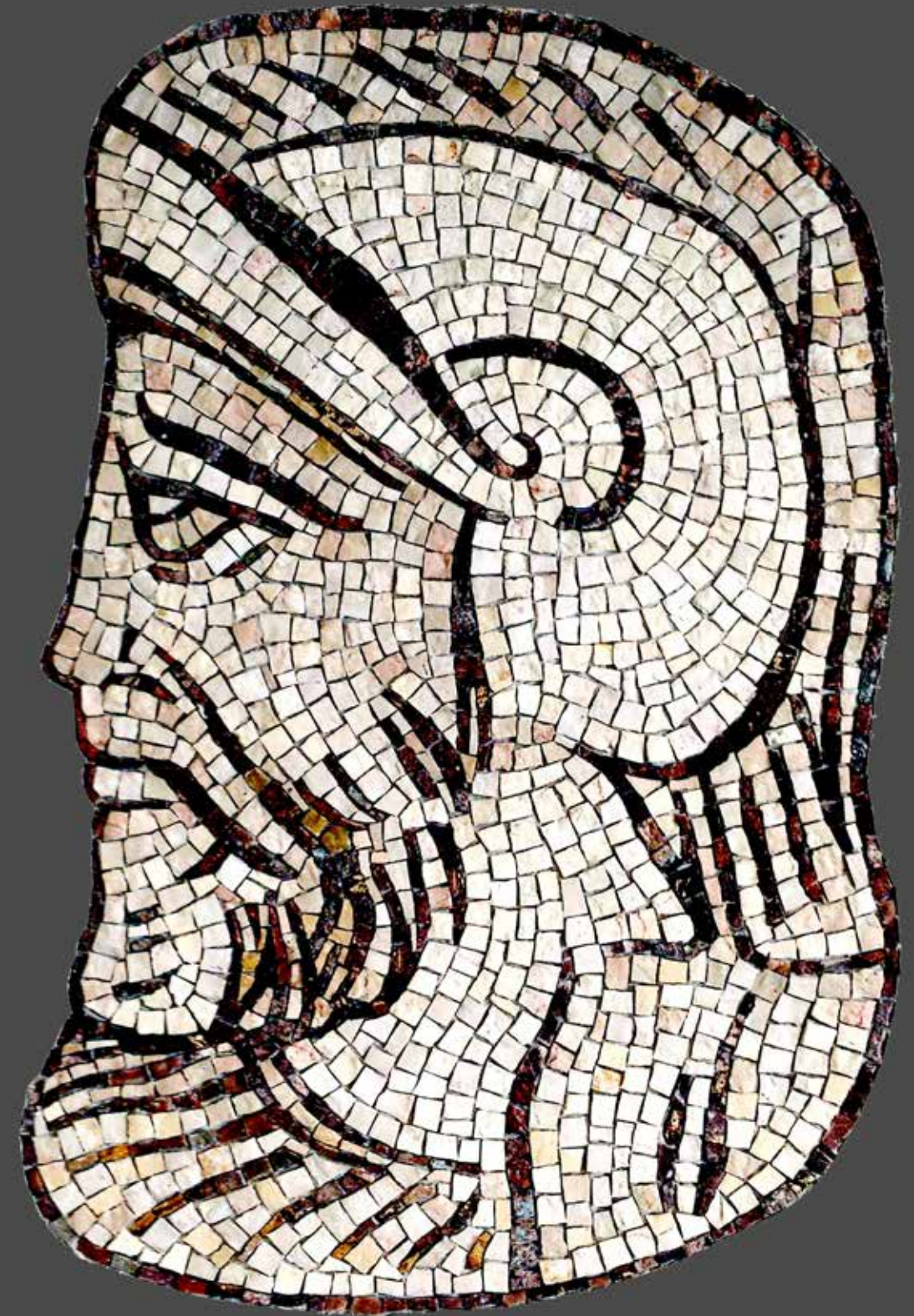
The home of lightweight stone

Our History

Tracing back to our family roots, Cristofoli International has been synonymous with stone. A family operated business, our passion for stone has lived through generation after generation and continues through today.

Our humble beginnings as early pioneers of terrazzo composites are the foundations of who we are today. 60 years later our passion for innovation and quality have not changed.

Our leading lightweight stone technologies draw from our rich past, and underpin what we do. This is why we can assure you will always receive expert advice, a professional service and quality end products.



PRODUCT OVERVIEW

CONTENTS

Product Overview

<i>Cristolite</i>	8-9
<i>Key Features</i>	10-11
<i>Standard Materials</i>	12-15



PRODUCT OVERVIEW

Cristolite™

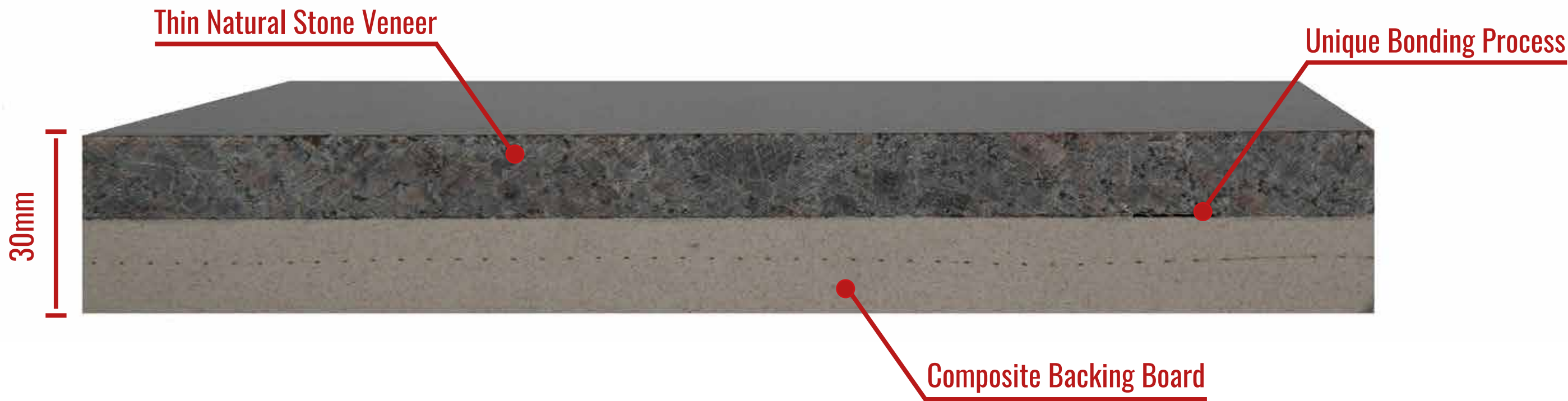
Panel Design

Improving on our tried and tested honeycomb composites, Cristolite features a composite, fire resistant backing board.

Utilising a unique bonding process we combine a thin veneer of natural stone to composite backing board.

The result is a dimensionally stable, strong, lightweight and fire proof panel, with a wide choice in natural stone finishes.

<u>Panel Weight</u>	48 kg/m ²
<u>Panel Size</u>	2.65m x 1.25m
<u>Fire Class</u>	Euroclass A2-s1-d0
<u>Thickness</u>	30mm



PRODUCT OVERVIEW

Key Features

Lightweight

Traditional cladding over two stories require 40mm thickness of stone. We reduce the stone to 15mm, decreasing the overall weight substantially.



Fire Resistance

Our unique bonding process and composite backing board are highly fire resistant. They exhibit almost no fire producing properties, classified Euroclass A2-s1-d0.



Green

Using over 60% less stone conserves our natural resources and reduces our carbon footprint for transport. The panel also offers fantastic BREEAM potential.



Strength

Cristolite produces higher strength values than traditional stone. This makes it suitable for high wind loadings and satisfies impact testing.



Large Format

The panels strong mechanical performance allow to scale up to large sizes with panel sizes up to 2.6m x 1.25m. Their rigidity ensures no bowing or warping.



Insulation & Acoustics

Composite panels are terrific insulators of heat and sound. Cristolite performs similarly thanks to the changing densities of stone and composite.



PRODUCT OVERVIEW

Standard Materials

Natural Stone

We offer a selection of standard materials that are suitable for external cladding over 18m.

Our selection demonstrates a collection of modern colours and textures but are mechanically suitable for a harsh exterior environment.

Thanks to modern technology, natural stone can be finished with an abundance of textures. From classical polished or honed, to sandblasted, matte or even lasered features.

Colour & Style Matching

Looking for a particular look? Not a problem! Our team can find suitable material for your needs. With our advice and guidance we can help achieve your desired look.

Jura Beige



Nero Impala



Jasmine White



PRODUCT OVERVIEW

Standard Materials

Jura Limestone



Moleanos



Moonstone



Steel Grey



Greenstone



Rosso Multicolour



SYSTEM OVERVIEW

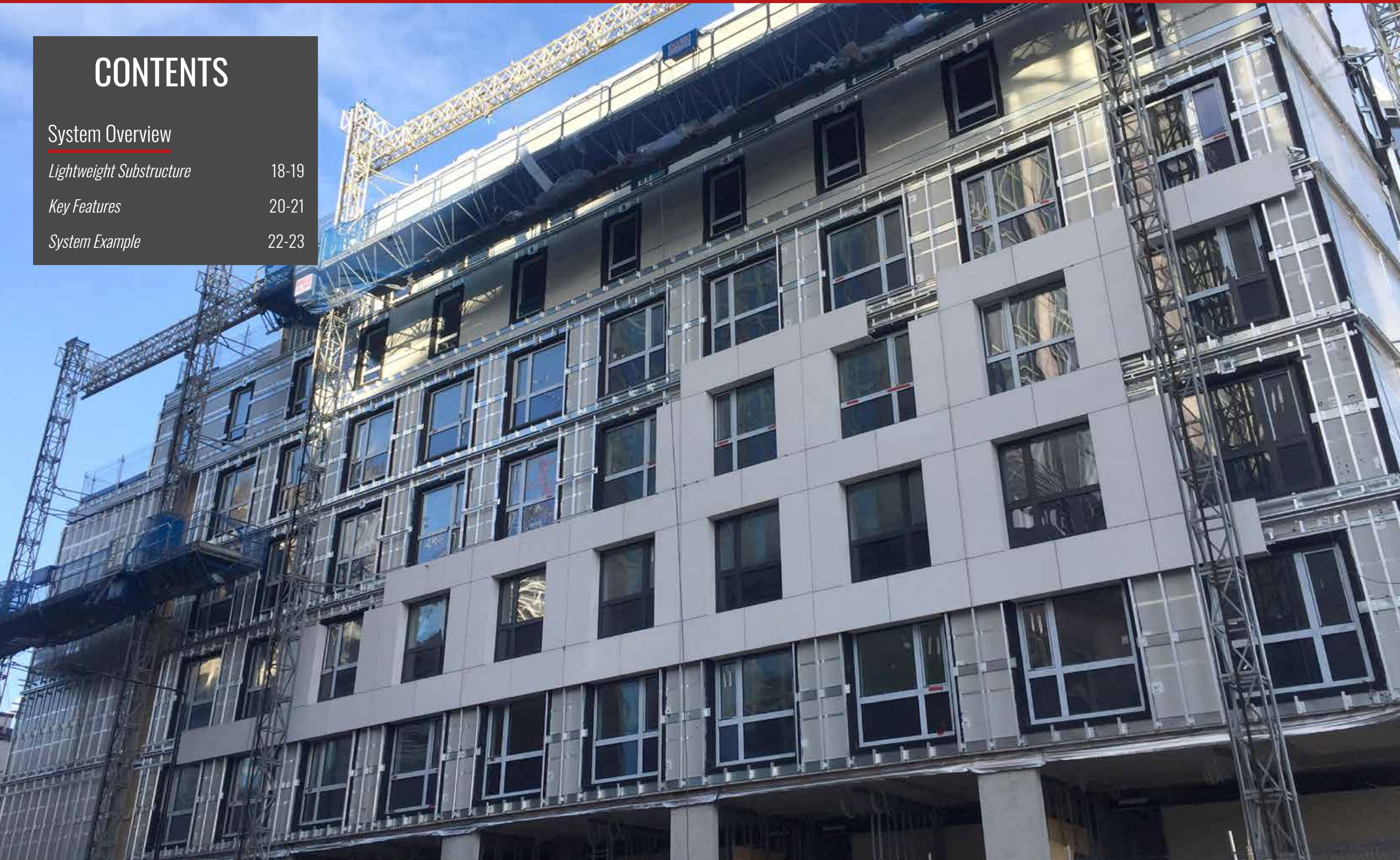
CONTENTS

System Overview

Lightweight Substructure 18-19

Key Features 20-21

System Example 22-23



SYSTEM OVERVIEW

Lightweight Substructure

Aluminium Framing System

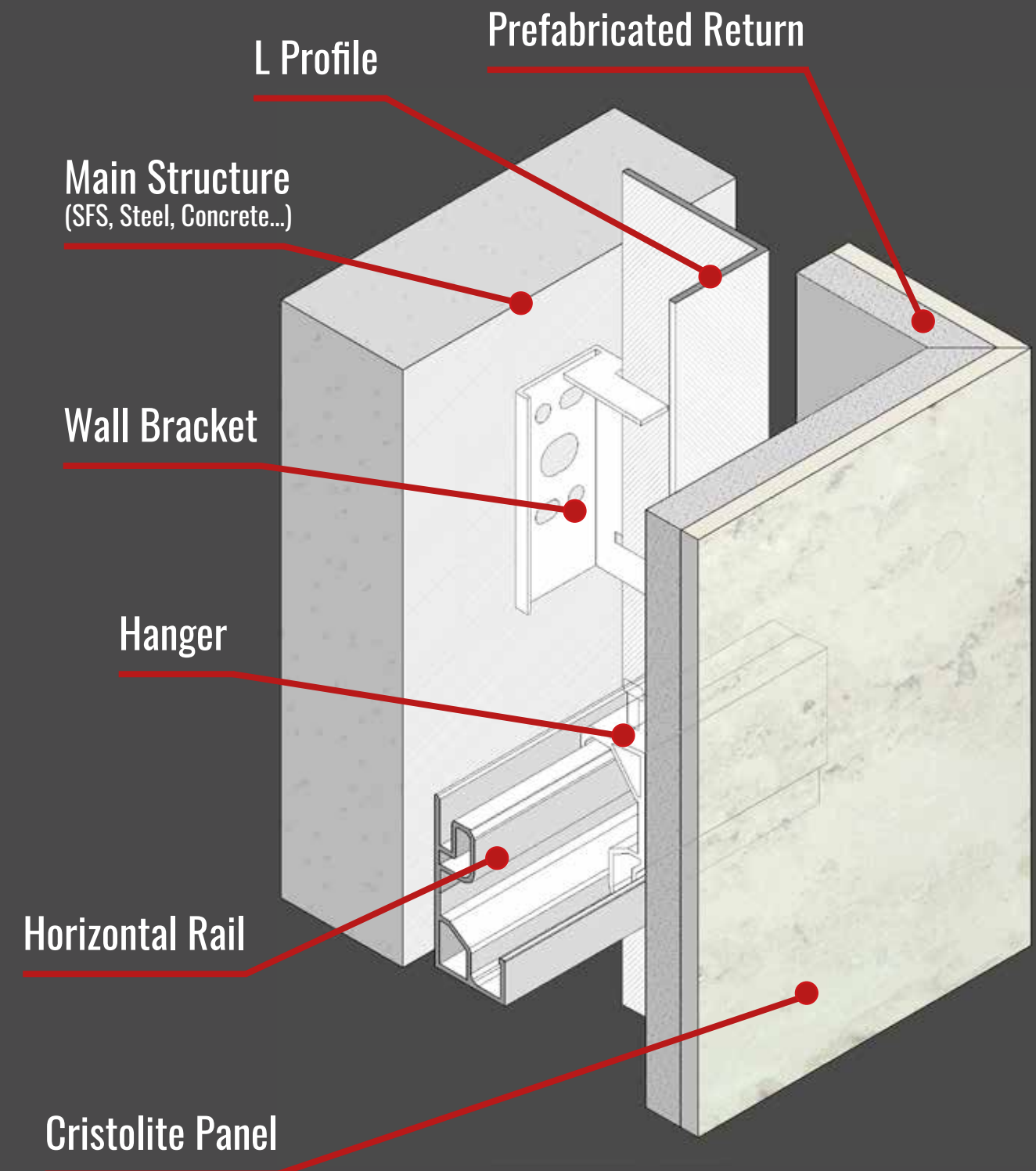
We utilise an aluminium subframe system to support our lightweight stone panels. Designed in-house and suitable for both internal and external structures, this system removes the need for wet installation of stone.

Cristolite panels are cut to size, supporting fixings and hangers attached and simply hung onto the rail system.

Thanks to the stone panels low weight, the supporting structure can be reduced. This substantially impacts the overall construction of the building.

A lightweight cladding system saves on overall installation time and building cost!

Less deadweight = less costly structure



SYSTEM OVERVIEW

Key Features

Large Format

Large panel sizes reduce joints to improve overall aesthetics. Combined with a wide variety of materials and finishes we can create a truly unique look.



Fire Resistance

Cristolite panels are highly fire resistant. They exhibit almost no fire producing properties, and are Euroclass A2-s1-d0 classified. Perfect for buildings over 18m.



Green

Our ventilated facade is an excellent way to create a highly energy efficient wall, contributing significantly for BREEAM potential.



Speed

Utilising large panel sizes and lightweight framing systems is 50% quicker than traditional stonemasonry, significantly reducing site impact.



Easy Installation

The frameworks simple construction requires only semi-skilled labour. All parts are sent pre-fabricated negating any onsite assembly.



Insulation & Acoustics

Combined with suitable insulation, our ventillated facade can produce fantastic insulating and noise cancelling advantages.



SYSTEM OVERVIEW

System Example

Subframe Installation

This example features a stone monolith fixed onto the buildings' steel superstructure.

SFS framing is the secondary structure between the aluminium framing system which transfers the stone panels dead weight to the superstructure.

The entire system is pre-designed incorporating vital structural calculations. Assembly takes a matter of days.

This example was completed by a two man team.



7-10 Days

Installation Time

Stone Installation

Cristolite panels are delivered to site cut to size and with required hangers fitted. Corner pieces are already pre-manufactured and finished.

The installation procedure is simplified, as no onsite fabrication or cutting is required.

The wall can be installed in a matter of days, thanks to the simple “hang and fix” method. All joints are sealed to create a monolithic look.

This example was completed by a two man team.



3-5 Days

Installation Time

100m² Surface area

SERVICE OVERVIEW

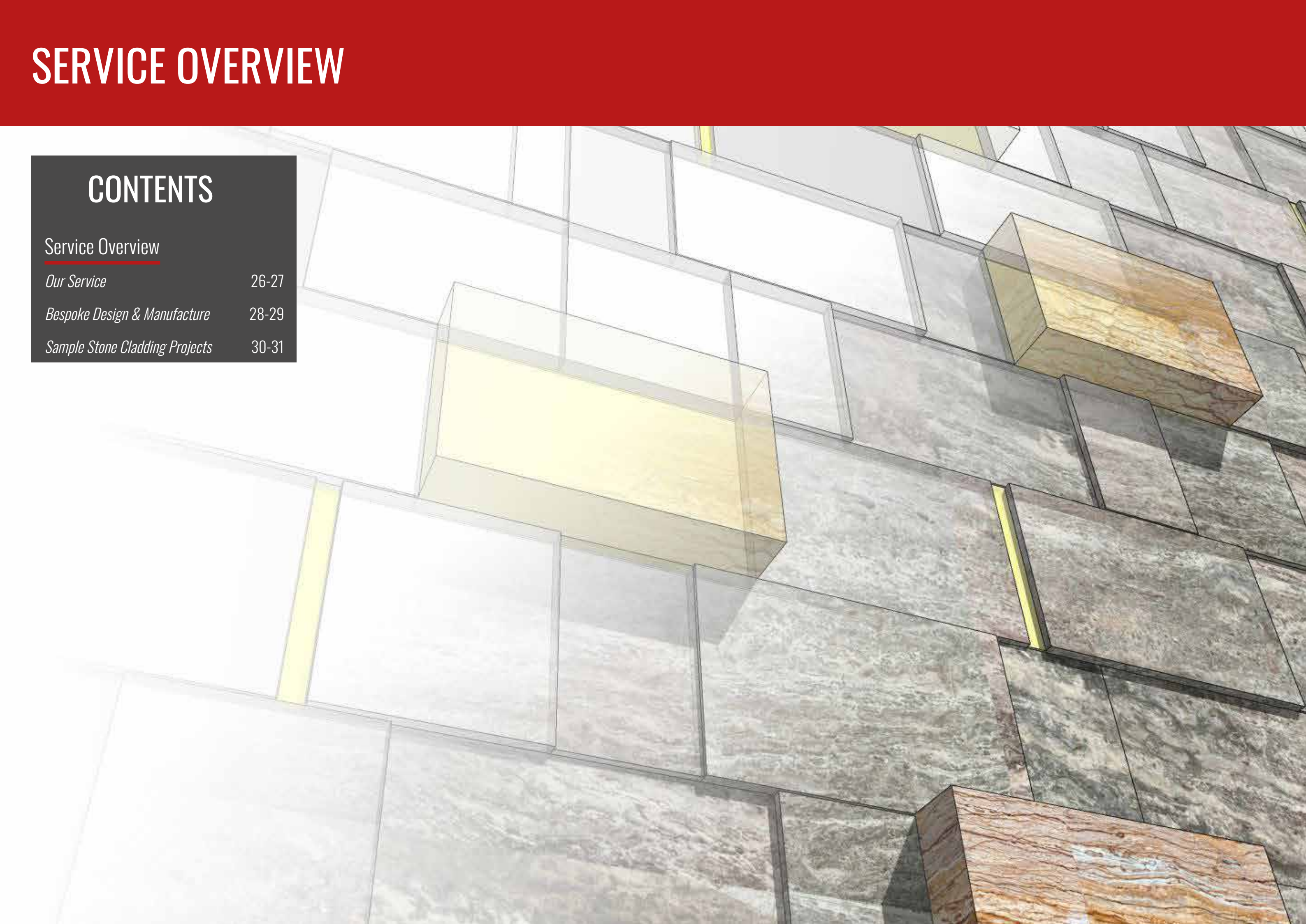
CONTENTS

Service Overview

Our Service 26-27

Bespoke Design & Manufacture 28-29

Sample Stone Cladding Projects 30-31



SERVICE OVERVIEW

Our Service

Turnkey Facades

With evolving building regulations and building designs pushing the boundaries of what is possible, Cristolite is our solution to the changing landscape of construction.

We offer a complete natural stone cladding turnkey service. Encompassing all aspects of supply, design, manufacture & fabrication.

The Cristolite system is the benchmark in external stone facades. Our precision engineering and quality designs push the limits of possibility.

Based near the port of Southampton UK, our manufacturing plant is quick to serve both international and domestic markets.

Material Manufacture

We responsibly source materials from across the globe and process them at our UK base. Cristolite panels are produced in-house.

Design

In-house architects, engineers and designers create to the latest building regulations, whilst ensuring optimum cost and project managing the process.

Manufacture & Fabrication

Complete fabrication and assembly at our UK plant using the latest in CNC machining. This ensures precision engineering to a millimetric degree. We pride ourselves on achieving a zero non-conformance delivery.



SERVICE OVERVIEW

Bespoke Design & Manufacture

Challenging Solutions

Our in-house design and manufacture capabilities allow us to push what's possible using Cristolite panels. Architectural challenges such as three dimensional fins are possible.

Design & Engineering

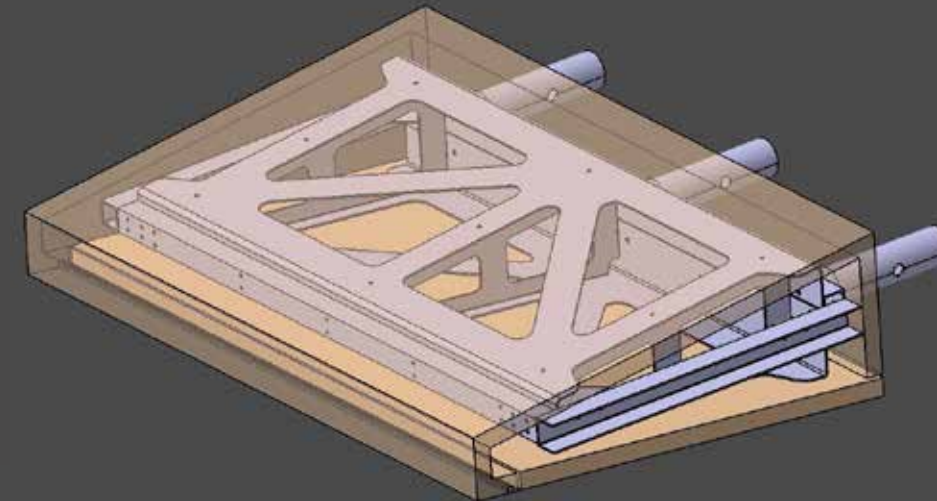
Our in-house team of designers, architects and engineers can tackle challenging design ideas. Using the latest technology we can create suitable designs on a subcontracting basis.

Manufacturing & Fabrication

Investment in the latest CNC machinery allow us to form Cristolite into intricate shapes. Everything is fabricated in-house guaranteeing quality and cost.



Architect Concept



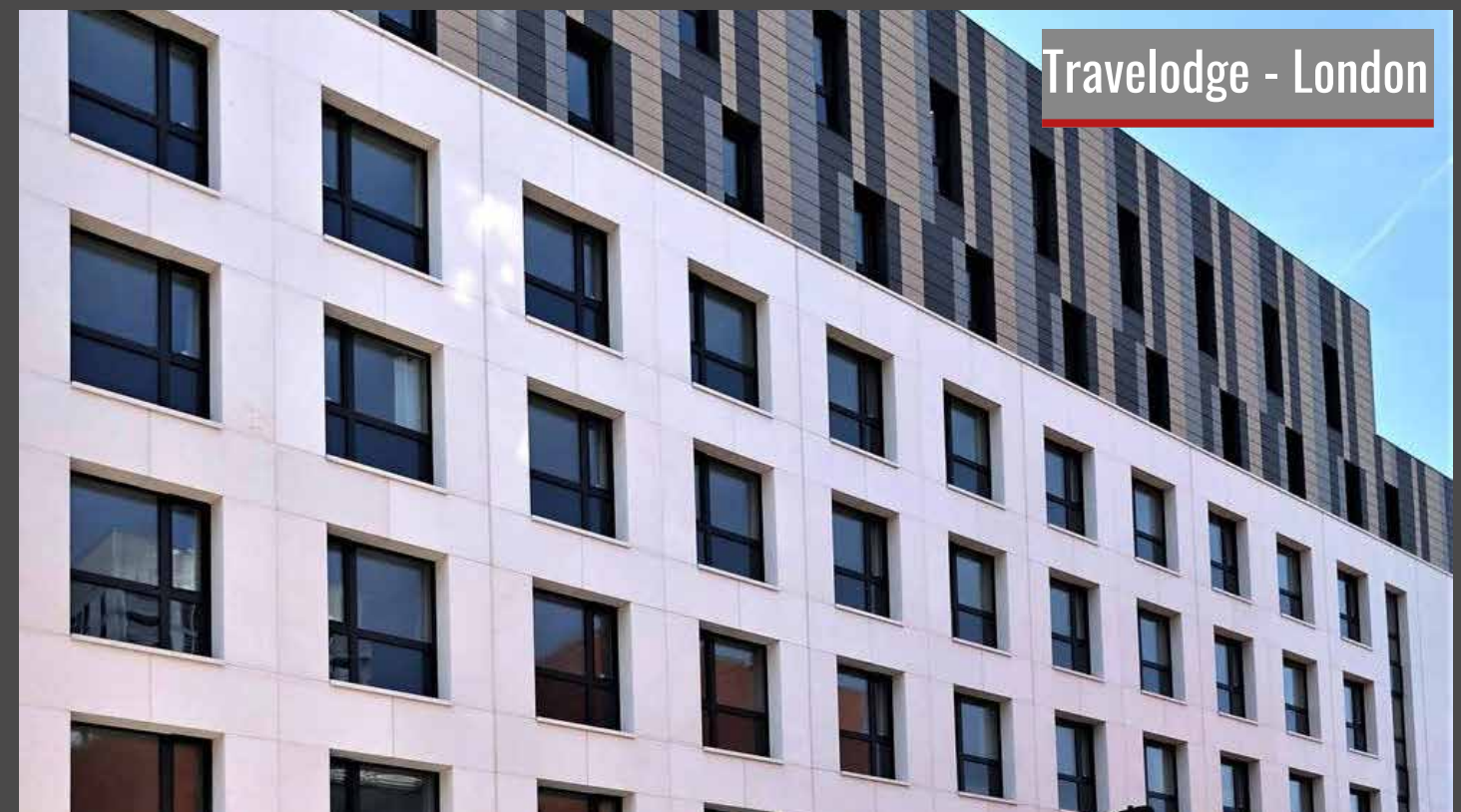
Technical Solution



Fabrication

SERVICE OVERVIEW

Sample Stone Cladding Projects



Our Cristolite cladding service is proven to shorten building programmes, reduce costs and simplify construction as we know it. Contact us today!

Phone

T: +44 (0)2380 661234

Email

E: sales@cristofoli.net

Address

Cristofoli International,
Stephenson Road,
Southampton,
Hampshire,
SO40 3SA,
United Kingdom.

Website

www.cristofoli.net/cristolite

